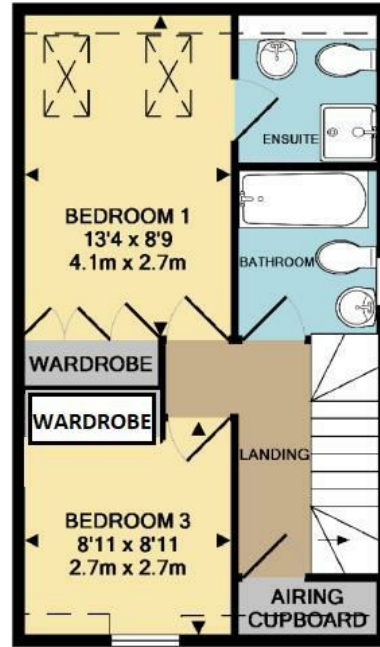
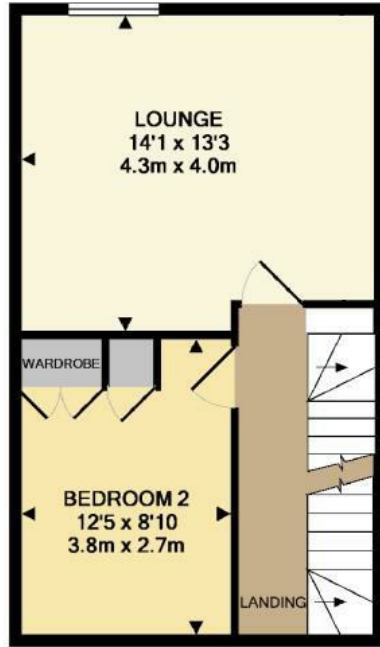
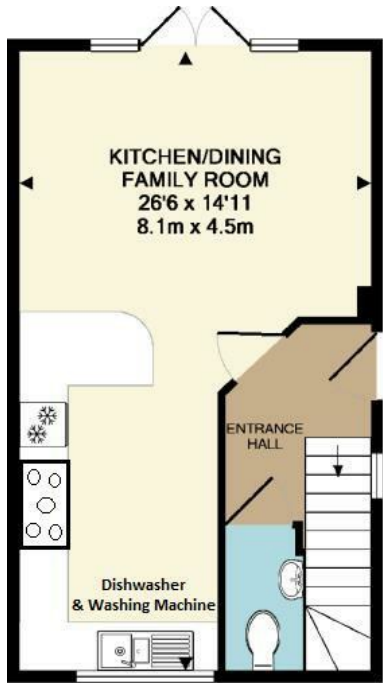




**22 GREENACRE WAY  
BISHOPS CLEEVE  
CHELTENHAM  
GL52 8SJ**



**22 Greenacre Way**

GROUND FLOOR  
APPROX. FLOOR  
AREA 376 SQ.FT.  
(35.0 SQ.M.)

1ST FLOOR  
APPROX. FLOOR  
AREA 377 SQ.FT.  
(35.1 SQ.M.)  
TOTAL APPROX. FLOOR AREA 1131 SQ.FT. (105.1 SQ.M.)

2ND FLOOR  
APPROX. FLOOR  
AREA 377 SQ.FT.  
(35.1 SQ.M.)

**FLOORPLAN - FOR GUIDANCE ONLY - NOT TO SCALE**





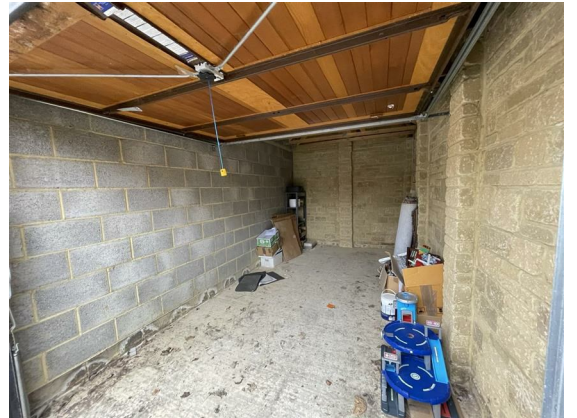
## **Per Calendar Month**

### **£1,400 Per Calendar**

IN THE FIRST INSTANCE EMAIL YOUR ENQUIRY ONLY - Spacious three double bedroom home arranged over three floors with garage and parking, double glazing and gas central heating. The accommodation is arranged to provide entrance hall, cloakroom (wc), lovely open plan kitchen/dining/family room that opens on to a rear garden. On the first floor is the large living room and a double bedroom with wardrobe. On the second floor is the main bedroom (with nice views) and an en suite shower room, there is also a further double bedroom and family bathroom.









Energy Efficiency Rating		
	Current	Potential
Very energy efficient - lower running costs		
(92 plus) <b>A</b>		<b>88</b>
(81-91) <b>B</b>		
(69-80) <b>C</b>	<b>78</b>	
(55-68) <b>D</b>		
(39-54) <b>E</b>		
(21-38) <b>F</b>		
(1-20) <b>G</b>		
Not energy efficient - higher running costs		
<b>England &amp; Wales</b>	EU Directive 2002/91/EC	

Sure Property Group  
 23 Bath Street  
 Cheltenham  
 Gloucestershire  
 GL50 1YA  
 01242 261222/ 241200  
 info@surecheltenham.co.uk

Tewkesbury Borough Council  
 COUNCIL TAX BAND C